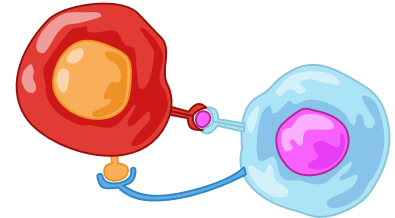


Immunomodulatory Assays

RayBiotech offers a comprehensive selection of multiplex arrays for immune checkpoint molecules, antibodies, anti-drug and drug antibody (ADA & DA) kits, and full testing services for your immunology research



Multiplex Assays for Immune Checkpoint Molecules

Human Immune Checkpoint Array C1 (Semi-quantitative, membrane)

4-1BB, B7-H2, B7-H3, B7-H4, CD200, CD200 R1, CD27, HVEM, CD27 Ligand, CD28, CD40 Ligand, CD80, CD86, CTLA-4, ICOS, LAG-3, OX40, OX40 Ligand, PD-1, PD-L1, PD-L2, TIM-1, TIM-3

Human Immune Checkpoint Array C2 (Semi-quantitative, membrane)

CD200 R1, CD27, CD28, CD40 Ligand, CTLA-4, ICOS, LAG-3, OX40, PD-1, TIM-1, TIM-3

Human Immune Checkpoint Array C3 (Semi-quantitative, membrane)

4-1BB, B7-H2, B7-H3, B7-H4, CD200, HVEM, CD27 Ligand, CD80, CD86, OX40 Ligand, PD-L1, PD-L2

Human Immune Checkpoint Molecule Array 1 (Quantitative, glass slide)

B7-H2, B7-H3, CD28, CD80, CD86, CTLA-4, ICOS, PD-1, PD-L1, PD-L2

Human Immune Checkpoint Molecule Array GS1 (Semi-quantitative, glass slide)

B7-H2, B7-H3, CD28, CD80, CD86, CTLA-4, ICOS, PD-1, PD-L1, PD-L2

Human Immune Checkpoint Receptor Protein Array

4-1BB, AIF1, B7-1, B7-2, B7-H3, B7-H4, B7-H5, Basigin, CD19, CD27, CD28, CD40 Ligand, CD47, CTLA-4, ICOS,IDO1, LAG-3, Nectin-1, Nectin-2, Nectin-3, OX40, PD-1, PD-L1, PD-L2, TIGIT, TIM-3, TLR4, TNF-alpha, TNFL6, TNF-R1, TNF-R2, TNFRSF18, TNFSF11, TNFR11, TNFR5, TNFR6, TREM-2

Mouse Immune Checkpoint Array C1 (Semi-quantitative, membrane)

4-1BB, CD27, CD40, CD40 Ligand, CD80, CTLA-4, Fas, Fas Ligand, Galectin-1, Galectin-3, OX40 Ligand

Rat Immune Checkpoint Molecule Array 1 (Semi-quantitative, membrane)

4-1BB, CD27, CD80, CD86, Fas, Fas Ligand, Galectin-1, Galectin-3, TIM-1

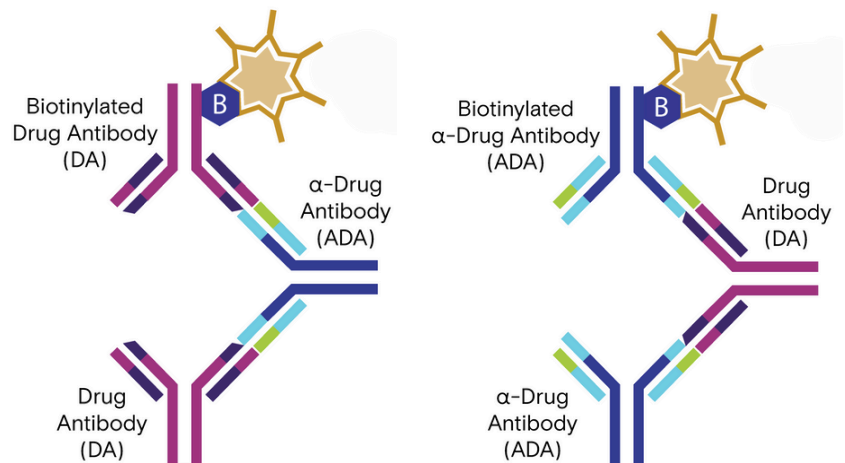
Don't see a panel that fits your needs? We can customize one for you! Choose from our vast library of antibody pairs to create an array panel specific to your research.

Immunomodulatory Assays

Anti-Drug Antibody (ADA) & Drug Antibody (DA) Assays

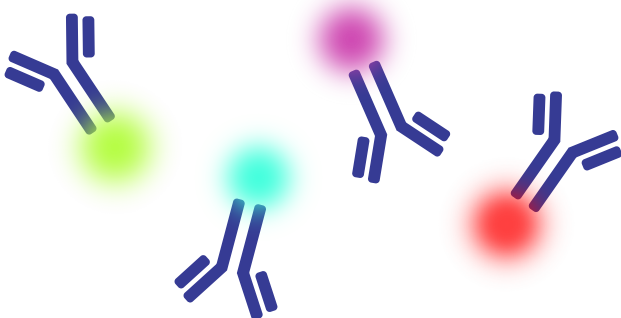
RayBiotech offers standard ELISA kits and flow cytometry-based RayPlex kits designed for the quantification of therapeutic drug antibodies or anti-drug antibodies

- Adalimumab
- Atezolizumab
- Avelumab
- Bevacizumab
- Cetuximab
- Daratumumab
- Denosumab
- Dupilumab
- Durvalumab
- Eculizumab
- Etanercept
- Golimumab
- Infliximab
- Ipilimumab
- Nivolumab
- Obinutuzumab
- Ocrelizumab
- Omalizumab
- Palivizumab
- Panitumumab
- Pembrolizumab
- Pertuzumab
- Ranibizumab
- Rituximab
- Sarilumab
- Secukinumab
- Tocilizumab
- Trastuzumab
- Ustekinumab
- Vedolizumab



Flow Cytometry Antibodies

We have antibodies against the most common immunomodulatory markers, available on a wide range of colors or unconjugated. We can also custom conjugate to any of our available fluorochromes for your specific needs.



- UV - 375, 450, 540, 610
- Violet - 450, 500, 600, 655
- Blue - 488
- Green - 594
- Blue/Green - 575, 647, 780
- Red - 647, 700, 780
- PerCP
- PE
- APC
- Biotinylated
- Purified